

# HOW TO CALIBRATE WITH A DOT

## Calibration guide for Motic Images Plus 3.0 Motic Live Imaging Module

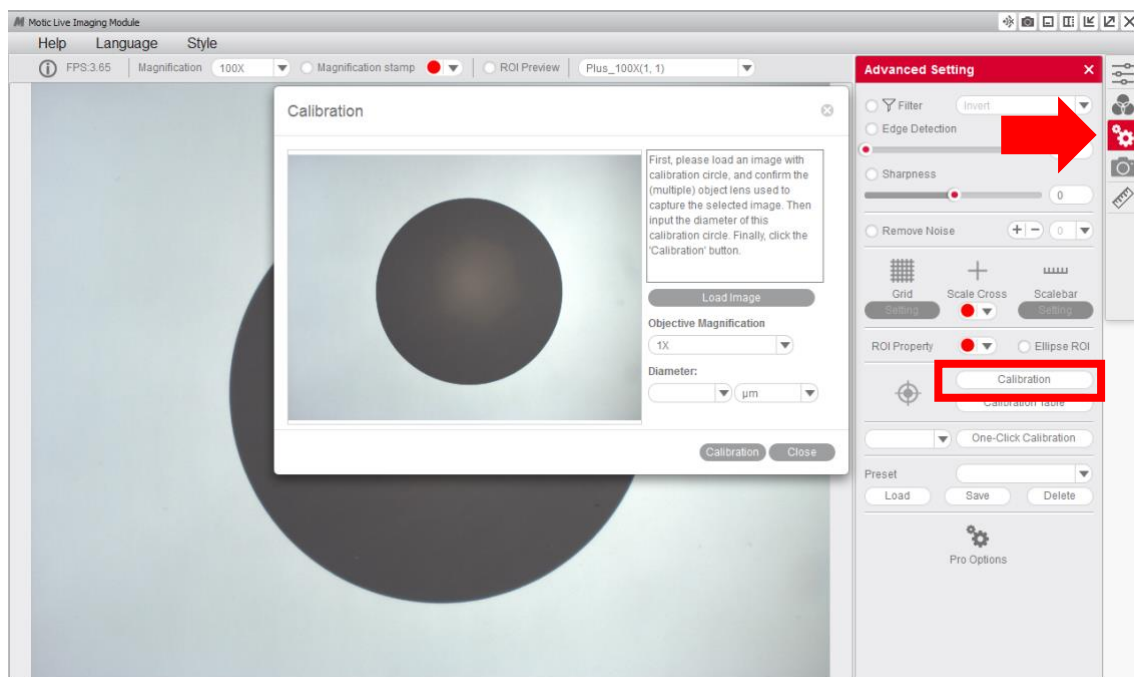
Calibration is only necessary if we wish to use the measurement, scale and grid functions of the software.

To calibrate the software with its Moticom or digital microscope, you will need to use the calibration slide supplied with said product.

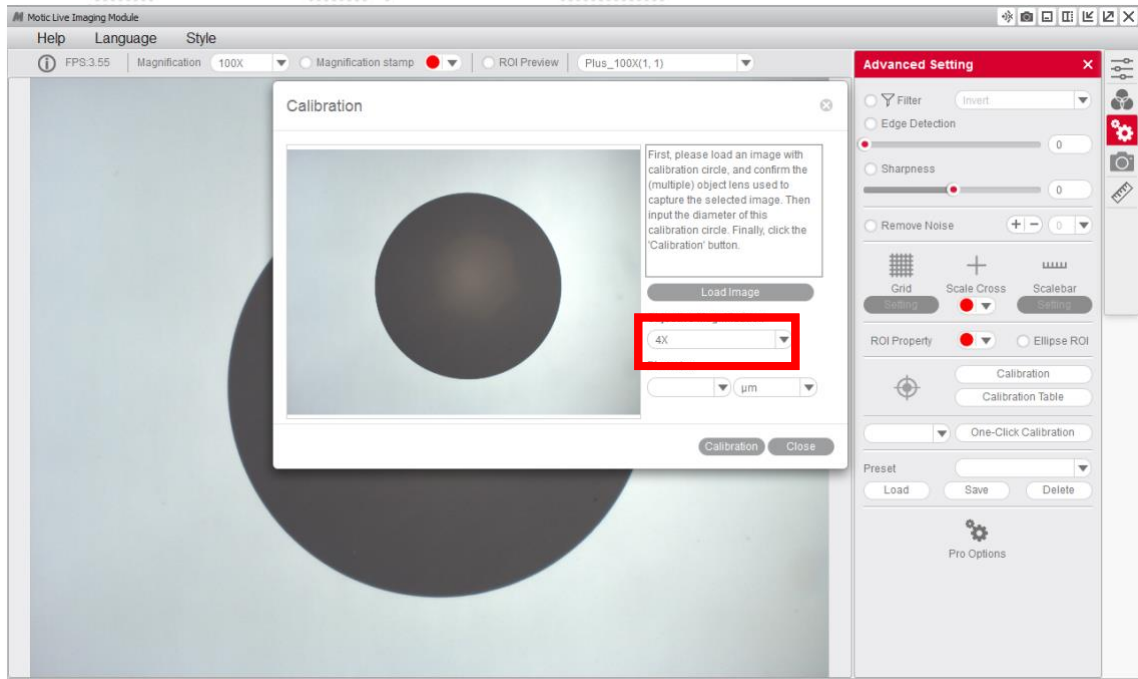
We will select one of the four dots that appear on the calibration slide, using the appropriate dot based on the objective that we wish to calibrate.



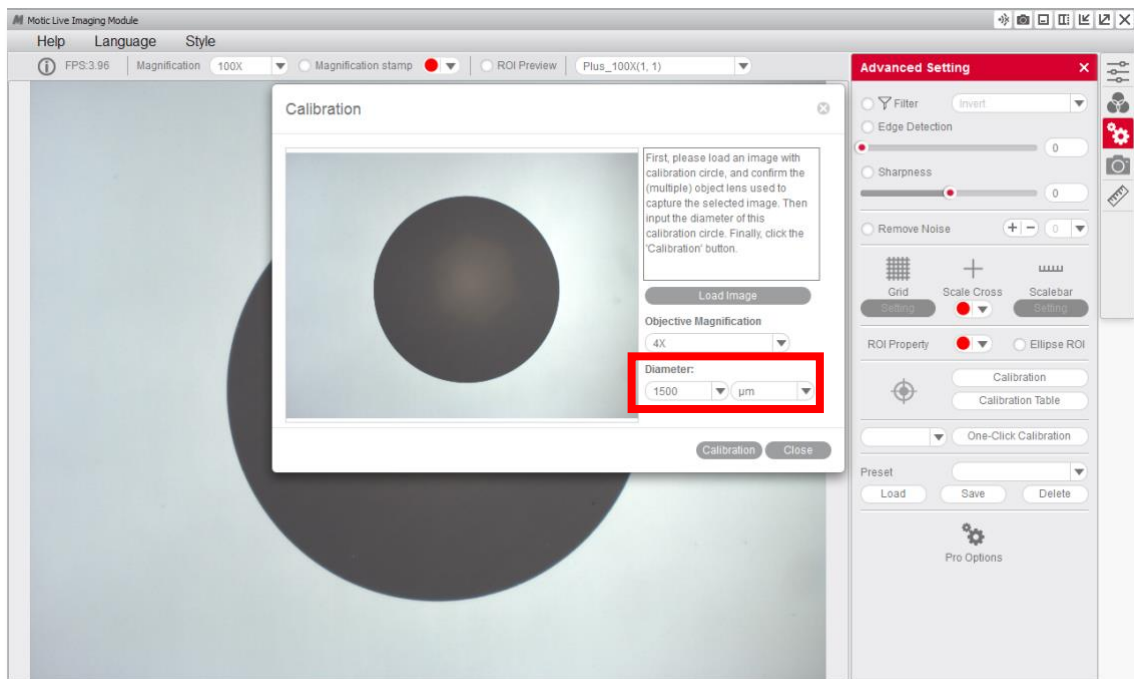
- 1- Once the dot is perfectly focused, and without it protruding from the field of view on the window, we will need to go to the “**advanced settings**” menu and select the option “**calibration**”.



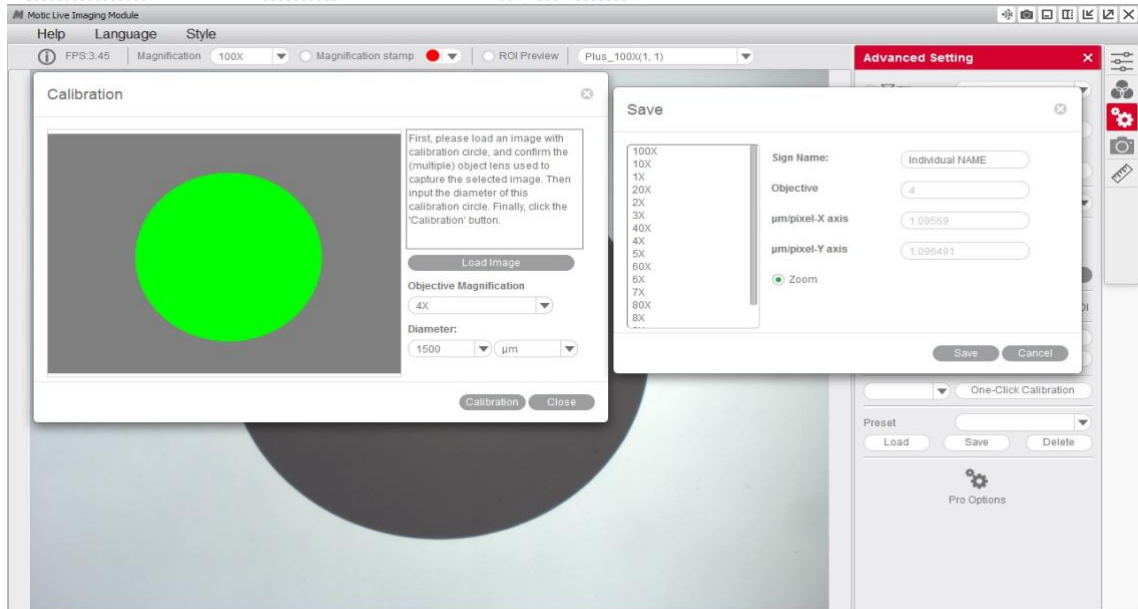
- 2- Select the “**objective**” that you are using to observe the dot on the calibration slide on the drop-down menu.



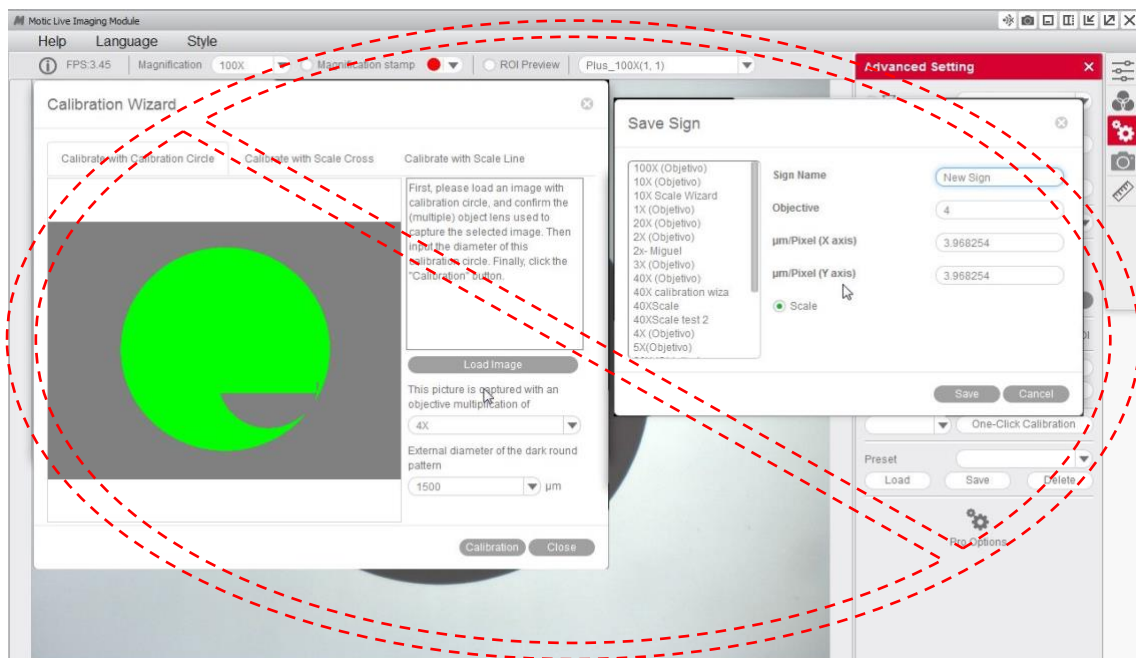
- 3- Select the “**diameter**” of the dot on the calibration slide on the drop-down menu.



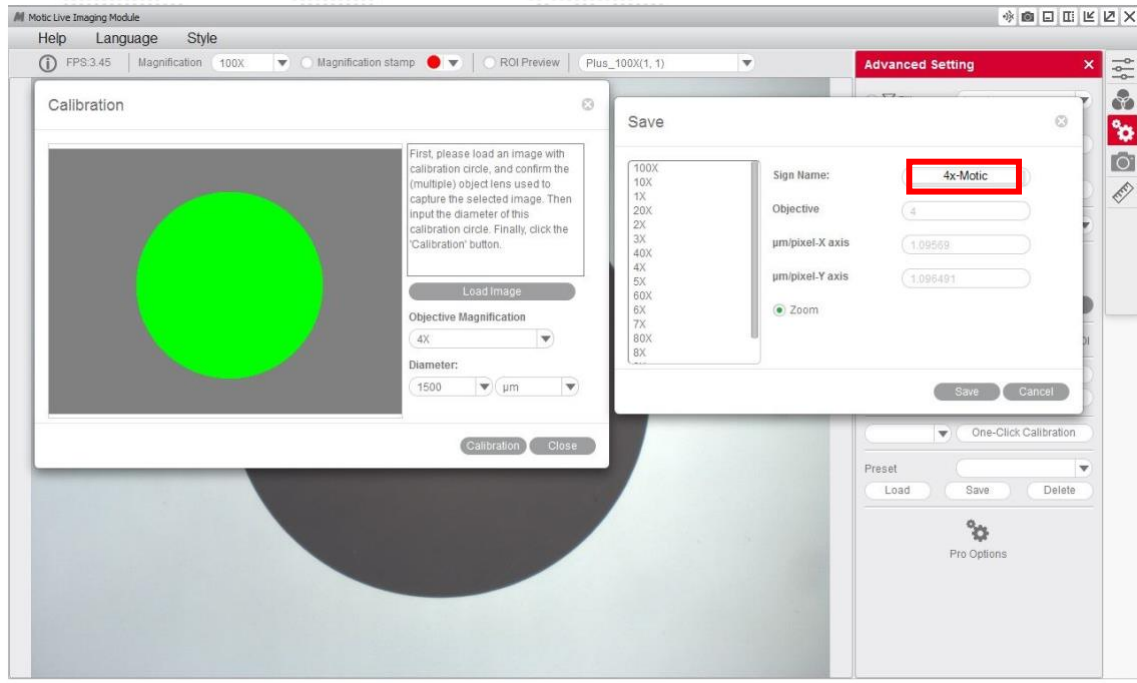
- After confirming the calibration, the selected area will automatically appear in green. In order to ensure the calibration has been completed successfully, the green area must match exactly with the area of the dot on the calibration slide.



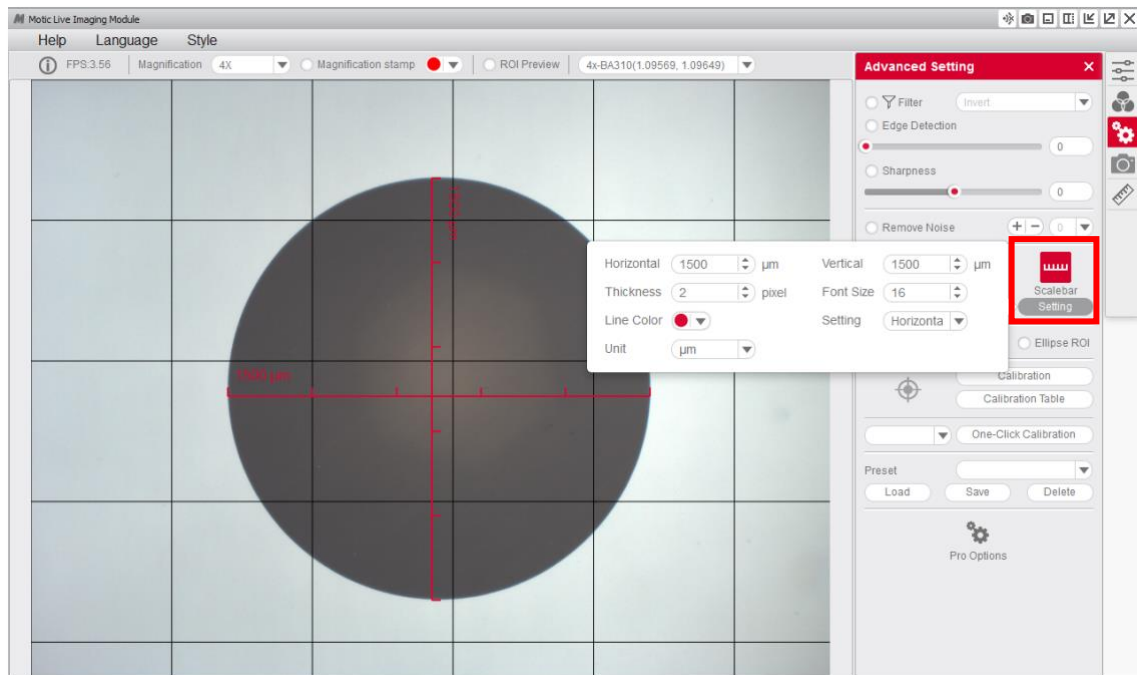
- If we see that the program has not detected the dot correctly, we will have to repeat the calibration by making the necessary adjustments to ensure the results are correct. For example:



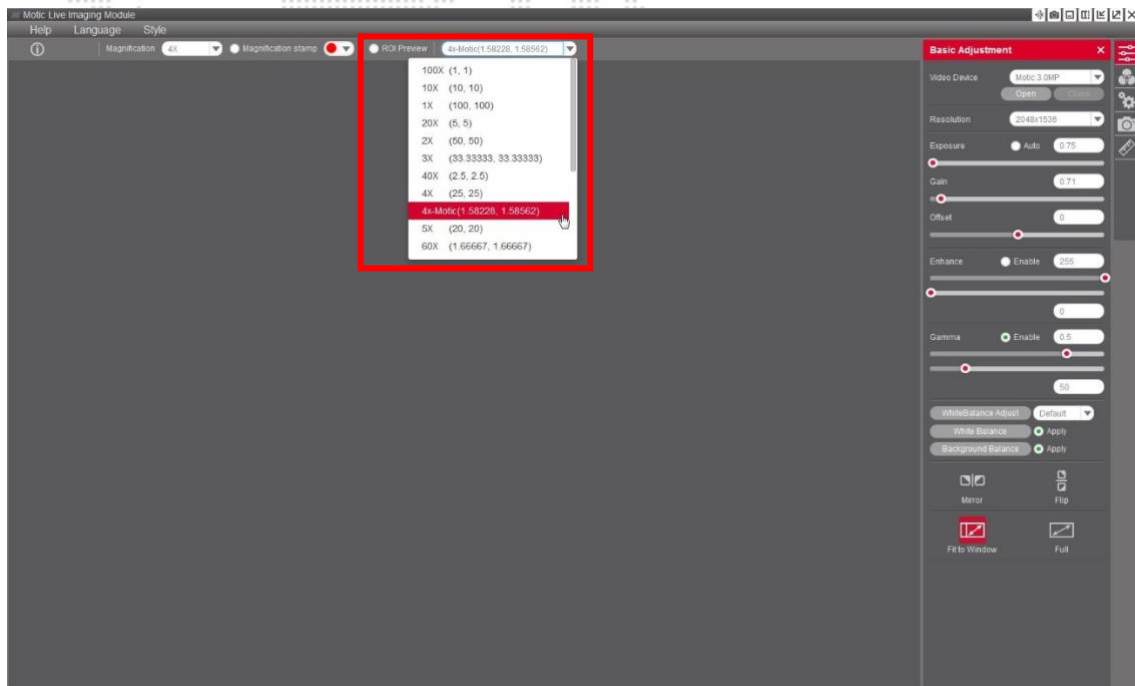
6- You will then be able to overwrite and rename the objective related to the calibration to your liking. This will help you identify it later on on the calibration table. For example: 4X-Motic and “save” the calibration.



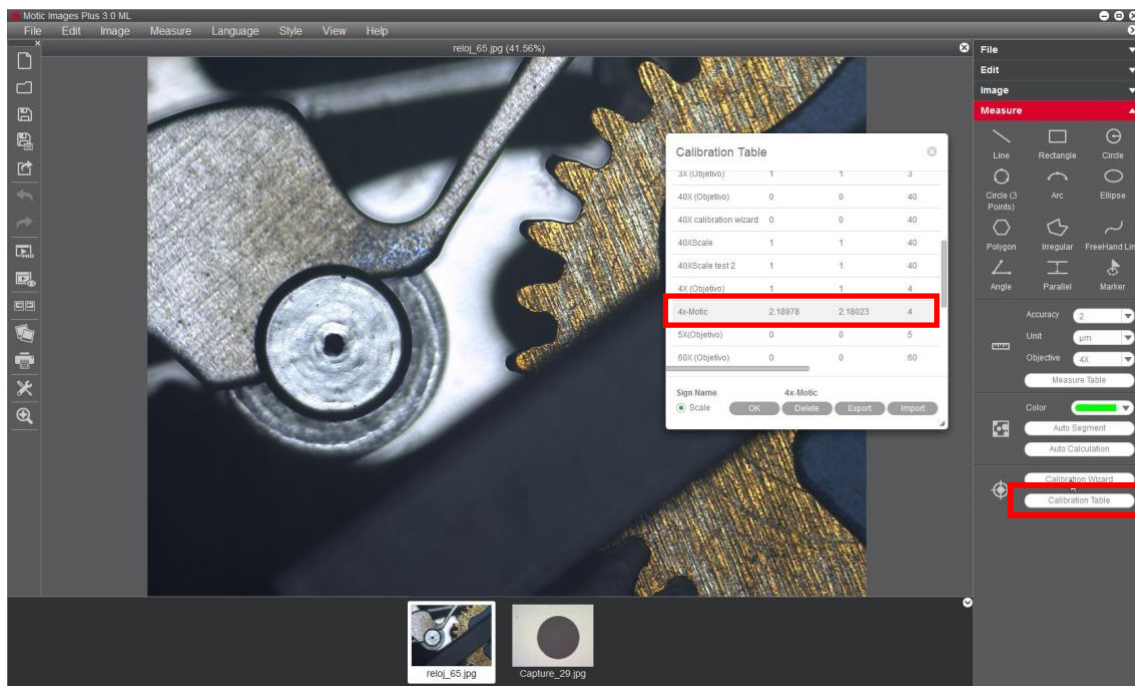
7- It is possible to overlap the grid and scale functions to ensure the calibration has been carried out properly.



8- Once the calibration is finalized, this new objective will appear in the drop-down menu of the Motic Live Imaging Module, allowing you to select it.



9- With the Motic Images Plus 3.0 software, once we have calibrated, it is also possible to take measurements after the image has been captured. Go to “measurements“, drop-down menu “objective“



Following the chart below, Motic recommends the following possible combinations of dot/objective to calibrate.

4X Objective / Dot 1500  $\mu\text{m}$ .  
10X Objective / Dot 600  $\mu\text{m}$ .  
40X Objective / Dot 150  $\mu\text{m}$ .  
100X Objective / Dot 70  $\mu\text{m}$ .

For more quick start guides to learn the different functions of our software,  
visit our web [www.moticamseries.com](http://www.moticamseries.com)

You can also contact our Digital Support Department by writing an e-mail to the  
following address: [digital.support@moticeurope.com](mailto:digital.support@moticeurope.com)